



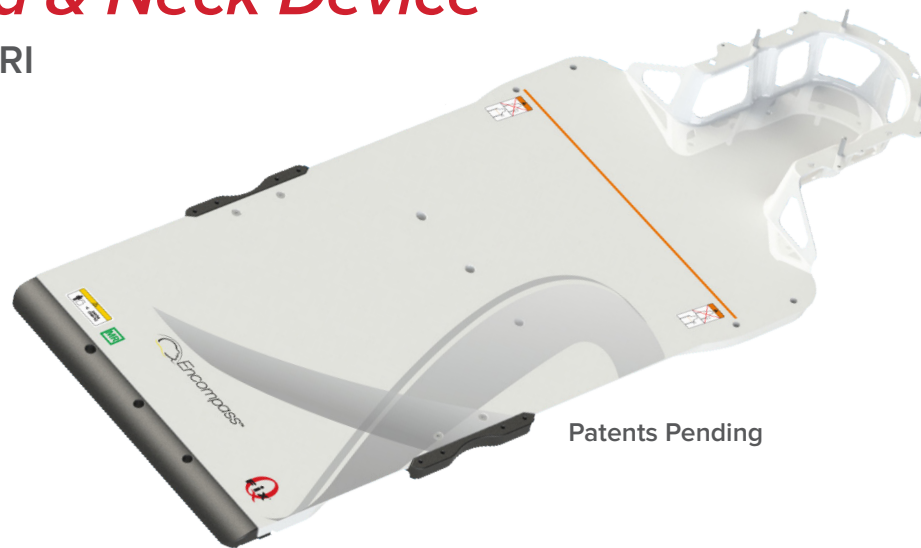
positioning  
patients for life.®

# MR Solutions



# Encompass™ SRS *MR Head & Neck Device*

RT-4600-01-MRI



## Encompass™ SRS MRI Head & Neck Device

The Encompass™ SRS Immobilization System is a highly specialized, non-invasive immobilization solution designed for stereotactic radiosurgery treatments. The clinical objective is to achieve submillimeter immobilization to precisely treat multiple lesions with a single iso center.

---

# Portrait™ *MR Intracranial, Head & Neck Device*

RT-4552MRI



## Portrait™ MR Intracranial, Head & Neck Device

The Portrait MR Intracranial, Head and Neck Device is CT and MR Safe for enhanced imaging and can also be used for treatment. The lightweight Portrait provides superior immobilization for a variety of brain, head and neck radiotherapy treatments.

The Portrait and Portrait S-Frame Thermoplastic Masks enable radiotherapy treatment with confidence, providing a high level of stability by limiting patient motion and reducing the probability of positioning errors.

# AccuFix™ Cantilever *Intracranial, Head & Neck Device*

RT-4525LMRI



Patented

## AccuFix™ Cantilever Intracranial, Head & Neck Device

This patented head and neck device seamlessly integrates shoulder depression. Prior to the development of the AccuFix Cantilever Intracranial, Head & Neck Device, therapists tried to depress the patient's shoulders with ropes or straps by using large, costly pieces of thermoplastic. Its unique cantilever design allows for full 360-degree treatment with minimal attenuation.

---

## BoS™ *Headframe*

RT-4535BOSMRI



## BoS™ Headframe

The Base of Skull (BoS) Headframe is specifically designed to meet the unique requirements of proton therapy for patient immobilization and beam transmission. The BoS Headframe is engineered to rigidly support the patient without using a flat base that blocks the use of important proton beam angles.

# Access™ Supine *MR Breast & Lung Treatment Device*

RT-4546MRI



## **Access™ Supine MR Breast & Lung Treatment Device**

The Access Supine MR Breast & Lung Treatment Device with ArmShuttle is MR Safe for enhanced imaging. It is designed for ease of use and to maximize patient comfort.

# ArmShuttle™ *Elite*

RT-4546C



CALYPSO  OK

## **ArmShuttle™ Elite**

The ArmShuttle Elite is effective for increasing breast and lung setup repeatability. The ArmShuttle is lightweight and can be used by itself or in conjunction with other devices.

# Access™ *Prone Breast Device*

RT-4544



## Access™ Prone Breast Device

The Access™ Prone Breast Device is MR Safe to guide patients seamlessly from simulation through treatment. Foam padding increases patient comfort and a removable insert can be positioned for either left or right breast treatment.

---

# SofTouch™ *Elite Bellyboard*

RT-4464-02



CALYPSO  OK

## SofTouch™ Elite Bellyboard

The SofTouch Elite Bellyboard is an adjustable stabilization platform designed to position the lower bowel away from the treatment field during prostate radiotherapy. The removable caudal cushion and separate belly support cushions allow for custom patient setup. The SofTouch Elite Bellyboard's unique semi-firm radiolucent foam provides precise, repeatable positioning and is contoured to relieve pressure point stress and improve patient comfort. Multiple cushion configurations provide optimal anatomical placement of both external and internal anatomy for improved clinical outcomes.



# SofTouch™

## *Knee Wedges & Foot Block*

RT-4489KW, RT-4489KW-01 & RT-4489FB



CALYPSO  OK



### **SofTouch™ Knee Wedges & Foot Blocks**

The SofTouch Knee Wedges & Foot Blocks are designed to provide repeatable positioning and are contoured to relieve pressure point stress and improve patient comfort. They are lightweight and easy to clean.

---

# SofTouch™

## *Couch Top Pad*



### **SofTouch™ Couch Top Pad**

SofTouch Couch Top Pads are supportive and comfortable for patients during a variety of radiotherapy procedures.

# VacQFix™ Cushions



CALYPSO  OK 



## VacQFix™ Cushions

The VacQFix System offers contoured positioning with the ability to mold to a specific patient. This allows for greater reproducibility with today's sophisticated treatment methods.

VacQFix cushions are custom formed for patient comfort and positioning accuracy, becoming rigid when a vacuum is applied. They can be easily cleaned and reused after each course of treatment. Fine denier fabric and small-diameter foam-bead fill combine to increase conformity and reproducibility.

---

# Polycarbonate Headboard

RT-4548



## Polycarbonate Headboard

The Polycarbonate Headboard provides a stable platform for head and neck patient positioning using U-Frame thermoplastic masks. It can also be used as the top plate on the Tilt-Pro™ Tilting Base and AccuFix™ for additional head and neck treatment options. The Polycarbonate Headboard has low attenuation and is completely free of metal for enhanced imaging and treatment.



**NEW** Suremark™ *Liquimark*

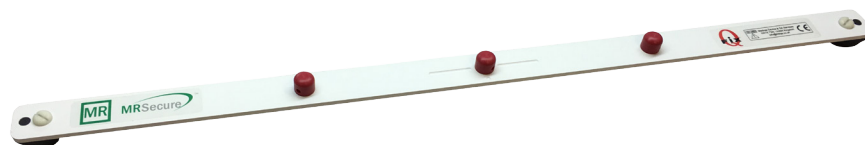


**Suremark™ Liquimark**

Cost-effective fiducial markers for MRI. Liquimark markers are NON-METALLIC, LATEX-FREE, and perform consistently and accurately in a variety of applications.

**Locating *Bar***

RT-4551BARMRI



**Locating Bar**

MR compatible, three pin locating bars are used on MRI Tables and Treatment Couch Tops to index standalone positioning and immobilization accessories.



Qfix  
Avondale, PA  
+1 610.268.0585  
sales@Qfix.com  
www.Qfix.com